

Highlands

Home to the new royalty



Progress Report July, 2013

Design & Construction Management



Promoted by



HIGHLANDS AT A GLANCE...



Highlands – home to the new royalty! True to its tagline, Highlands is being built to exacting standards under the supervision of domain experts to create an abode for the discerning few. Here, we would like to share with you glimpses of our journey since we began a couple of years ago.

Highlands
Home to the new royalty
Progress Report
July, 2013



Promoted by



HIGHLANDS AT A GLANCE...



Highlands, which is tucked away from the noise and pollution of the city, is coming up on 30 acres of land in Mysore overlooking the vast airport premises and the majestic Chamundi Hills. Its location is perfect in terms of connectivity and proximity to hospitals, educational institutions, transport hubs, commercial establishments, places of worships, public parks and lakes.

Highlands
Home to the new royalty
Progress Report
July, 2013



Promoted by

ESVEE
group
WE MAKE DREAMS COME TRUE

ISHYA
HOSPITALITY • REALTY

HIGHLANDS AT A GLANCE...



Highlands has obtained all the statutory approvals from related agencies. The infrastructure being developed at Highlands matches international standards. It exceeds the requirements of local statutory agencies such as MUDA, Jn-NURM, KSPCB and NBC. Highlands is in a league of its own where innovation and benchmark specifications are concerned.

Highlands
Home to the new royalty
Progress Report
July, 2013



Promoted by

ESVEE
group
WE MAKE DREAMS COME TRUE

ISHYA
HOSPITALITY • REALTY

ROAD WORKS



Highlands is providing best quality concrete roads designed for comfort and safety. These engineered concrete roads are strong, durable and virtually maintenance free.

Highlands
Home to the new royalty
Progress Report
July, 2013



Promoted by

ESVEE
group
WE MAKE DREAMS COME TRUE

ISHYA
HOSPITALITY • REALTY

WATER SUPPLY WORKS



Highlands is providing dual water supply lines meant to carry fresh potable water to individual villa plots and treated waste water for gardening /landscaping. Best quality HDPE pipe lines are being laid and tested as per Jn-NURM standards before providing individual connection to each villa plot.

SANITATION WORKS



Stone ware pipe sewerage lines and RCC Manholes are being built as per Jn-NURN standards. The RCC Manholes are being provided with circular cover slabs with retrievable handles to facilitate periodical inspection and maintenance. Highlands will also build 2 no's state of the art sewage treatment plants towards the conclusion of the project to facilitate treatment and reuse of treated sewage and waste water.

POWER SUPPLY



Highlands has planned to provide power supply through a network of transformers and underground cables. A hybrid street lighting arrangement using conventional power and solar power is also being implemented. The street light poles are mounted on decorative RCC pedestals.

AVENUE PLANTATION



The avenue plantation which was started two years ago has yielded very good results. A variety of avenue trees are growing along the streets under the care of our dedicated team of gardeners.

Highlands
Home to the new royalty
Progress Report
July, 2013



Promoted by

ESVEE
group
WE MAKE DREAMS COME TRUE

ISHYA
HOSPITALITY • REALTY

PARK DEVELOPMENT WORKS



Highlands dedicated team of gardeners are working regularly in developing and maintaining the landscaped parks which are being augmented every month. In a matter of years these lung spaces are going to serve the occupants of highlands as leisure, exercise and relaxation zones.

Highlands
Home to the new royalty
Progress Report
July, 2013



Promoted by

ESVEE
group
WE MAKE DREAMS COME TRUE

ISHYA
HOSPITALITY • REALTY

STORM WATER DRAIN WORK



The storm water drainage arrangement in highlands is unique in terms of construction and design. Built in concrete, these storm water drains are designed as channels which facilitate excellent rain water harvesting. The unique silt trap arrangement traps the silt in chambers before letting the rain water flow into storm water drains.

RAIN WATER HARVESTING WORKS



Highlands has created rainwater harvesting ponds of various sizes in each park. These ponds are meant for storing the rain water and they receive the discharge from the storm water drains built across the entire township.

FOOTPATH AND DRAINAGE WORKS



Designer interlock block footpath is being provided on one side of the road while the other side sports a green turf. The silt traps covered with perforated slabs ensure continuity of the footpath while enabling silt free discharge into the storm water drains.

ENTRANCE FACADE WORKS



Designed by DNA Barcelona, the entrance arch of Highlands is one of the highlights of this project. This modern structure is high and wide enough to facilitate the movement of large carriers such as, bore-well rigs and fire engines. This pleasing and inviting structure symbolizes Highlands' commitment to detail: where i's are dotted and the t's crossed.

HIGHLANDS VILLA EAST FACING



Ground Floor

PLAN - east apartments



First Floor

PLAN - east apartments



Highlands proposes to build duplex villas in the built up area range of 1500 Sft for 2-BHK and 1800 Sft for 3-BHK. These villas are designed by DNA Barcelona, and shall conform to the best of international design standards while also complying with Traditional Vasthu guidelines.

HIGHLANDS VILLA WEST FACING



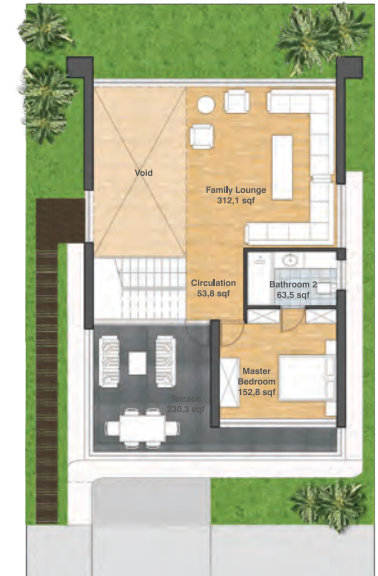
Ground Floor

PLAN - west apartments



First Floor

PLAN - west apartments



Highlands proposes to build duplex villas in the built up area range of 1500 Sft for 2-BHK and 1800 Sft for 3-BHK. These villas are designed by DNA Barcelona, and shall conform to the best of international design standards while also complying with Traditional Vasthu guidelines.